

# VPA III

## A New Generation of Video and Protocol Analyzer

The VPA is an ARINC 818 analyzer in a complete system. This essential tool for the ARINC 818 design engineer is comprised of a PC, card, and software that captures an ARINC 818 stream and provides a complete analysis at multiple levels to include: byte, FC frame, video line, and video frame. In addition to this, the VPA evaluates line and frame timing. Unlike fiber channel analyzers, this analyzer is video- and ARINC 818- centric.

### APPLICATIONS:

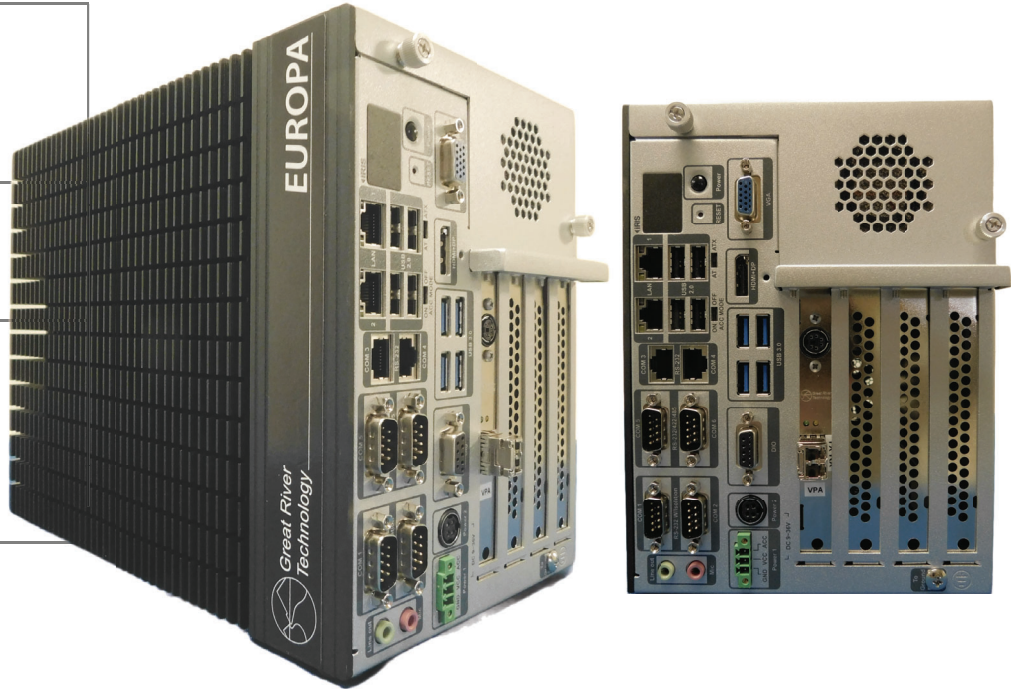
- Design Engineering
- Robustness & Qualification Testing
- Video and Protocol Analysis

### LINK RATES: (Gbps)

- 1.0625   ■ 2.125   ■ 3.1875   ■ 4.25
- 5.0   ■ 6.375   ■ 8.5   ■ 10.0

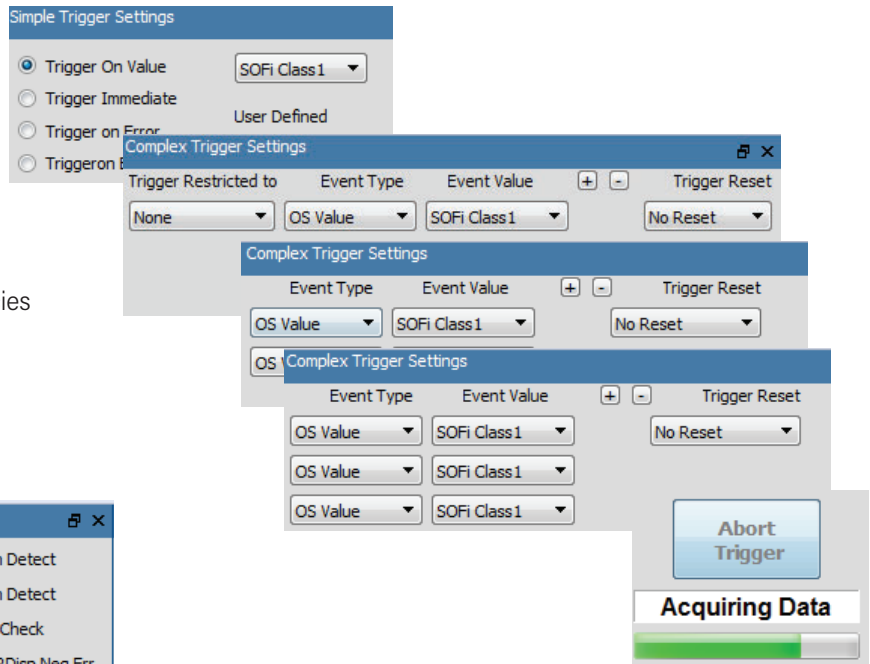
### PIXEL TYPES:

- Monochrome 8-bit
- Monochrome 16-bit
- Color RGB 8:8:8
- Color RGB 5:6:5



### FEATURES:

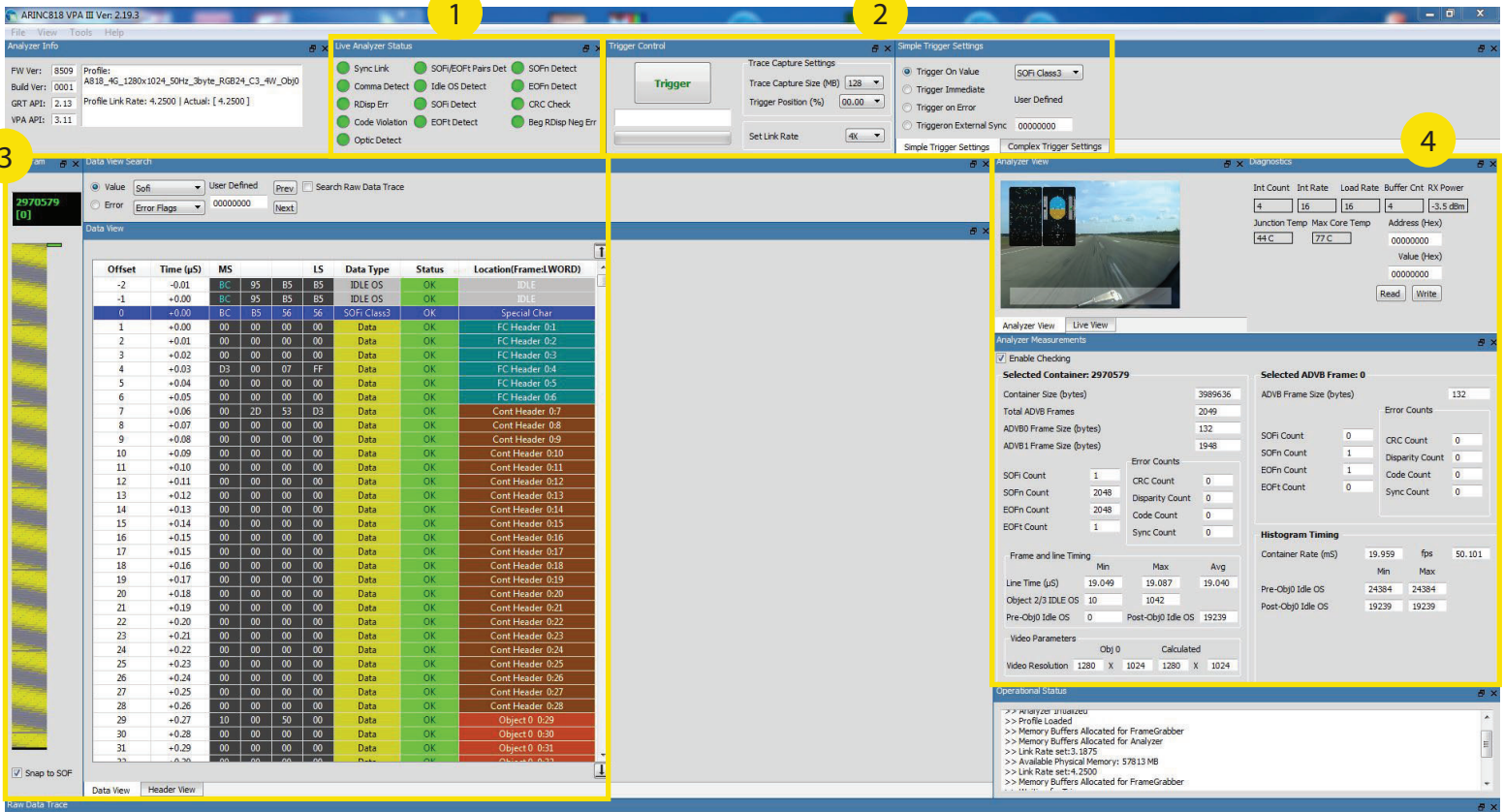
- Multilayer (up to 3 levels) Trigger Within Payload or Object 0
- Pre- and Post- Trigger Capture Settings
- Raw Data Trace Captures up to 4 GB with Save and Load Capabilities
- Dockable User-Friendly Interface
- Real-Time Monitoring of Link Status (ex. Sync Link, SoF Detect)
- Video Live View
- Data Search
- Automatic Error Checking
- ADVB and Container Header Decoding
- Link Status
- Accommodates Custom Resolutions and Frequencies



GREAT RIVER TECHNOLOGY est distribué par TECHWAY S.A.S. - [www.techway.com](http://www.techway.com) - [info@techway.com](mailto:info@techway.com) - +33 1 64 53 37 90

VPA III GUI:

- 1 Discover validity of link synchronization, presence of SOFi, EOFt, and idle ordered sets with **Status Indicator** lights.
- 2 **Trigger Data Capture** manually or on a value such as: SOFi, SOFn, EOFt, EOFn, Idle OS; CRC, Disparity, Code Violation, or Sync Link errors; or from an external source.
- 3 View a graphical representation of the captured data with a **Histogram Block**. This block will indicate where the data in the grid to the right is located, as well as provide a tool tip label corresponding to the ADVB frame a user's cursor is hovering over. View raw data in detail with the **Data View** area. Drill down to the offset in long words from the beginning of a data trace, the time in microseconds from the beginning of a data trace or relative to any point the user desires, the particular data type, presentation of error, and location and function within ADVB frame.
- 4 Confirm image transmission with **Live View**; **Analyze Measurements** such as Selected Container, Selected ADVB Frame, Frame and Line Timing, and Video; and **Enable Checking** to troubleshoot ARINC 818 timing, counts, and stats.



SPECIFICATIONS:

Operating System	Windows 10, 64-bit	Connectors	Sync, SFP
Power Requirement	20 W @ 12 V	Form Factor	PCIe half length
Operating Temperature	0-50°C (32-122°F)	PCIe Gen 3 x8	4 GB plus throughput
Weight	~ 9.1oz	Memory	256 MB (2 banks of 128 MB)
Physical Dimensions	6.875" x 4.2" PCIe standard height short	Standards	ARINC 818

HOW TO BUY:

The part number for VPA III (VA-A8) is as follows:

VA-A8- **1** -F6-TR-00- **2**

**Interface 1**  
O3 = Fiber 1310nm  
O8 = Fiber 850nm  
CX = Copper Coax

**Custom Characters Assigned by GRT 2**

**Note:**  
The VPA III must be purchased in a Europa system.