

# SAM G3

## ARINC 818 Stand-Alone Converter Module

Use the SAM G3 to convert HDMI to/from ARINC 818. Factory configure up to 15 video formats with varying conversion directions, link rates, video resolutions, and pixel types. The intuitive touchscreen is used to access basic control of the unit, including switching between formats and turning on a test pattern. While this unit is a stand-alone module, it is delivered with a Windows Application Software used to control one or more units.

### APPLICATIONS:

- View ARINC 818 on a Standard Computer Monitor
- Transfer Live Video from Graphics Card to ARINC 818

### LINK RATES: (Gbps)

- 1.0625
- 2.125
- 3.1875
- 4.25
- 5.0
- 6.375
- 8.5
- 10.0

### PIXEL TYPES:

- Monochrome 8-bit
- Monochrome 16-bit
- Color RGB 8:8:8
- Color RGB 5:6:5



### CONFIGURATION OPTIONS:

- XGA 1024x768 @ 60Hz
- SXGA 1280x1024 @ 60Hz
- SXGA+ 1400x1050 @ 60Hz
- WXGA 1440x900 @ 60Hz
- UXGA 1600x1200 @ 60Hz
- WXGA+ 1680x1050 @ 60Hz
- HD+ 1920x1080 @ 60Hz / 30 Hz
- 2K 2560x1440 @ 60Hz
- 4K 3840x2160 @ 30Hz



Contact us for other HDMI format options!

### FEATURES:

- Factory Configurable up to 15 different formats (ICDs)
- Touch Screen control and monitoring of unit status
- Select any installed ICD with a few taps
- SFP Optical with LC Connectors
- USB Control and Status from PC
- Real-Time Object 0 update using USB interface
- Control Test Pattern Outputs, including custom static images
- Optional Mounting Bracket (pictured right)



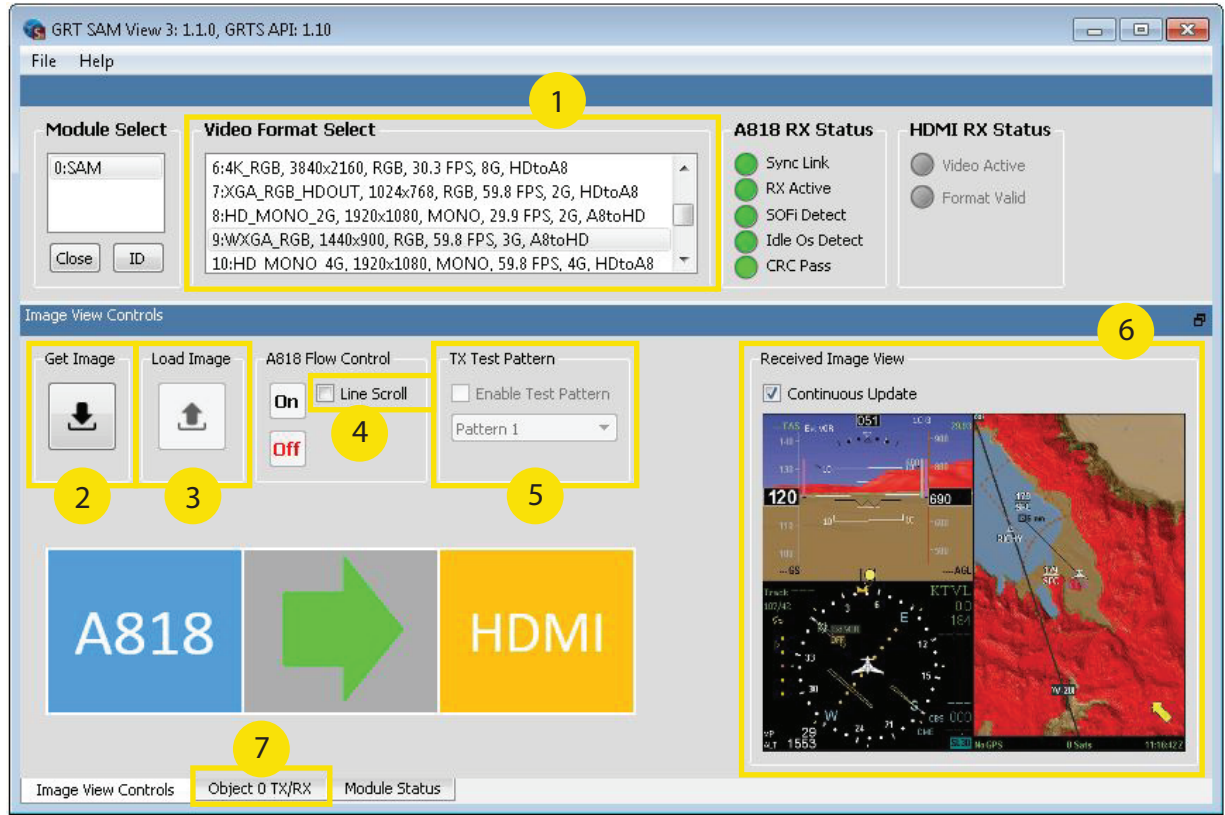
Optional Mounting Bracket

GREAT RIVER TECHNOLOGY est distribué par TECHWAY S.A.S. - [www.techway.com](http://www.techway.com) - [info@techway.com](mailto:info@techway.com) - +33 1 64 53 37 90

## SAM VIEW SOFTWARE APPLICATION:

Connect the SAM G3 to a PC via USB-C to use the SAM View Software Application. Open as many Applications as SAM G3 units to control all simultaneously.

- 1 Quickly select any preloaded ICD on the card from the **Video Format Select** list.
- 2 Save an image with **Get Image**.
- 3 Load an image of your choice with **Load Image**.
- 4 Visually confirm live video where it is being received by using the optional **Line Scroll** feature.
- 5 Send a preset or custom test pattern to output using **TX Test Pattern**.
- 6 View images captured or loaded from memory using **Image View**. Update Image View at a 1Hz rate by selecting **Continuous Update**.
- 7 Load, capture, and view Header Data in the **Object 0 TX/RX Tab**.



## SPECIFICATIONS:

Operating System	Windows 7, 8, 10, & 11, 64-bit	<b>Connections:</b> <ul style="list-style-type: none"> <li>■ 1x USB-C</li> <li>■ 1x DC Power Port</li> <li>■ 1x HDMI</li> <li>■ 1x SFP</li> </ul>
Power Requirement	15W @ 5V or 28V	
Operating Temperature	0 to 50°C (32 to 122°F)	
Weight	1.8lbs	
Physical Dimensions	6.3" x 4.5" x 2.5"	

## HOW TO BUY:

Determine your part number for SAM G3 (H3-A8) as follows:



**For Example:**  
H3-A8-08-4X-HH-SXP-BK



<b>Interface</b> <b>1</b> O3 = Fiber 1310nm single mode O8 = Fiber 850nm multi mode	<b>Link Rate (Gbps)</b> <b>2</b> 1X = 1.0625      8X = 8.5 2X = 2.125      10X = 10.0 3X = 3.1875     MM = Multiple Rates 4X = 4.250 6X = 6.375	<b>Video Port</b> <b>3</b> HR = HDMI Receive HT = HDMI Transmit HH = Both HDMI RX and TX	<b>Optional</b> <b>5</b> BK = Mounting Bracket
<b>Custom Characters Assigned by GRT</b> <b>4</b>			

GREAT RIVER TECHNOLOGY est distribué par TECHWAY S.A.S. - www.techway.com - info@techway.com - +33 1 64 53 37 90