

SAM G3 XI

Stand-Alone ARINC 818 Converter Module with User Configurable Video Formats

The SAM G3 XI offers the ability to customize video format parameters, including conversion direction, link rate, resolution, and pixel mode through the GRT XI Software. Convert a single channel of ARINC 818 to or from HDMI and store up to 15 video formats (ARINC 818 ICDs) in a single unit.

APPLICATIONS:

- ATP for Production Displays
- Display Development
- Cockpit Simulation
- Test Pattern Generation
- High-Resolution, High-Speed Video Recording

OPTIONS:

- XI Base Model: stores 1-4 video formats
- XI Expanded Model: stores 1-15 video formats

FEATURES:

- Implement a new video format (ICDs) in minutes
- Create a library of video formats
- Clone configurations to Velocity XI, Helios XI, or other SAM G3 XI devices

LINK RATES: (Gbps)

- 1.0625
- 2.125
- 3.1875
- 4.25
- 5.0
- 6.375
- 8.5
- 10.0*

PIXEL TYPES:

- Monochrome 8-bit
- Monochrome 16-bit
- Color RGB 8:8:8
- Color RGB 5:6:5
- YCbCr 422

HDMI OPTIONS:

- XGA 1024x768 @ 60Hz
- HD 1280x720 @ 60Hz
- WXGA 1280x800 @ 60Hz
- SXGA 1280x1024 @ 60Hz
- SXGA+ 1400x1050 @ 60Hz
- WXGA+ 1440x900 @ 60Hz
- UXGA 1600x1200 @ 60Hz
- HD+ 1920x1080 @ 60Hz
- DWide 2560x1024 @ 60Hz
- 4K 3840x2160 (Reduced Blanking) @ 30Hz

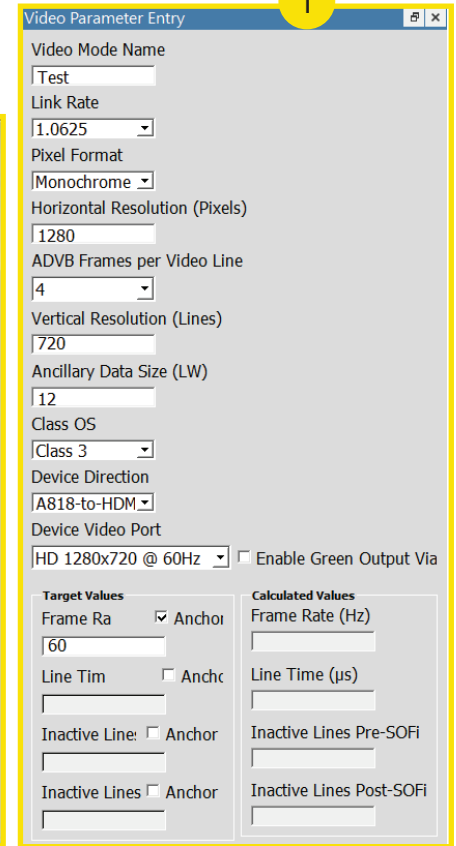
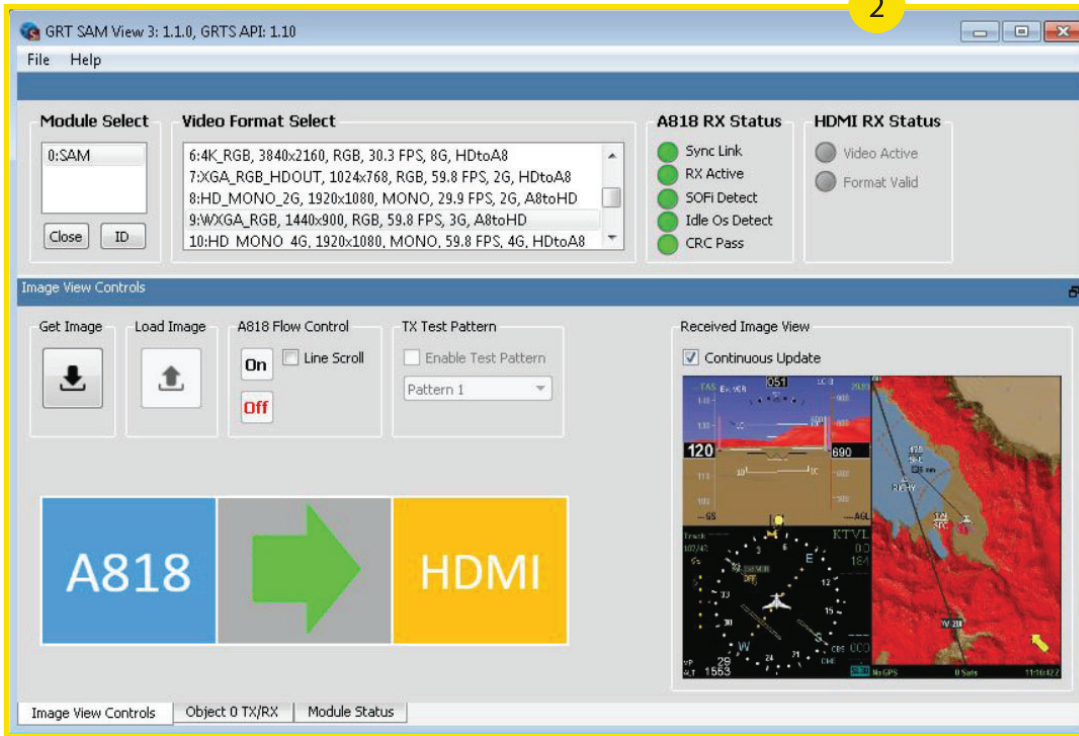


*All pixel types supported up to 8X (8.5 Gbps). Pixel type RGB 8:8:8 supported at 10.0 Gbps; other pixel types coming soon

GREAT RIVER TECHNOLOGY distributor : TECHWAY S.A.S. - www.techway.com - info@techway.com - +33 1 64 53 37 90

SAM G3 XI TOOL INTERFACES:

- 1 The **GRT XI Configuration Application** allows the user to define video format parameters such as supported link rates and pixel packing modes. Line, frame, or vertical blanking time parameters can be anchored for priority.
- 2 **SAM View Software Application** is used to control individual SAM G3 units once video formats are implemented.



SPECIFICATIONS:

Operating System	GRT XI Application: Windows 10 SAM View Application: Windows (64-bit only) 7, 8, 10, & 11	Connections: <ul style="list-style-type: none"> ■ 1x USB-C ■ 1x DC Power Port ■ 1x HDMI ■ 1x SFP
Power Requirement	15W @ 5V or 28V	
Operating Temperature	0 to 50°C (32 to 122°F)	
Weight	1.8lbs; 0.82kgs	
Physical Dimensions	6.3 x 4.5 x 2.5 in; 16.0 x 11.4 x 6.35 cm	

HOW TO BUY:

Determine your part number for SAM G3 XI (H3X-A8) as follows:

H3X-A8- **1** -MM-HH- **2** **3** **4** **For Example:**
H3X-A8-08-MM-HH-1500-BK

Interface 1 O3 = Fiber 1310nm single mode O8 = Fiber 850nm multi mode	Configuration Storage 2 O4 = 4 Formats 15 = 15 Formats	Custom Characters Assigned by GRT 3	Optional 4 BK = Mounting Bracket
---	--	---	---

To order, consult our Sales page at www.greatrivertech.com/sales. If no distributor is listed for your region or country, or if you need additional information about our custom firmware, please fill out the Product Inquiry Form on our website.

GREAT RIVER TECHNOLOGY distributor : TECHWAY S.A.S. - www.techway.com - info@techway.com - +33 1 64 53 37 90