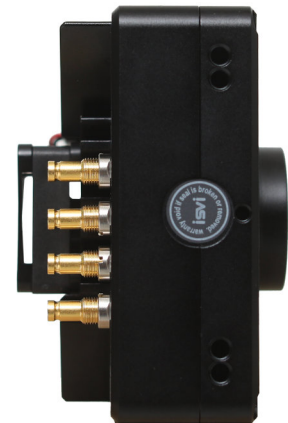
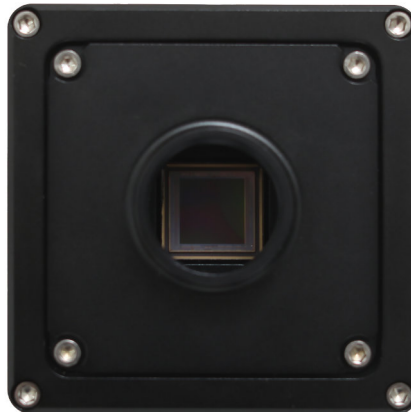


GX series



Resolution, Accuracy, Speed, Return-On-Investment



CoaXPress®

Feature

26.2M pixels, 16.8M pixels, 12M pixels
Compact pixel-pitch for better defect detection
User defined ROI for higher frame rates and less data

Accurary

Advanced PRNU, FFC and defect pixel corrections
Precise and stable multi-axis sensor alignment
Wide dynamic range with low-noise output

Speed

Increased inspection throughput
Faster frame rate, transferring images in less time

Return-on-investment

Industry-best price/ performance
Affordable performance upgrades to existing CL and low-res CXP systems
Throughput, Accurarcy and Reliability

Global Shutter CMOS Sensor

12MP, 16MP, 25MP

150fps, 110fps, 90fps

User defined ROI

User defined multi-FFC switching

CoaXPress

Color & Mono & Enhanced NIR

Defect Pixel Correction

8/10-bit Output Resolution

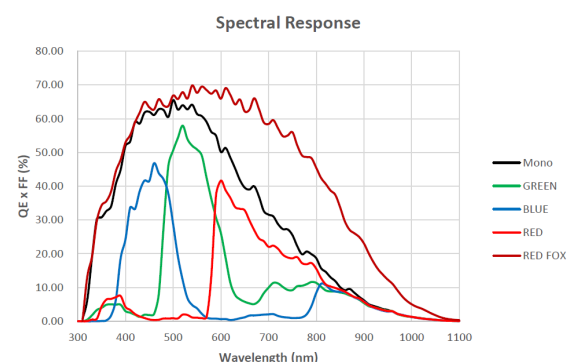
www.isvi-corp.com

ISVI is a forerunner in the design and construction of advanced high-speed, high-resolution camera technology.

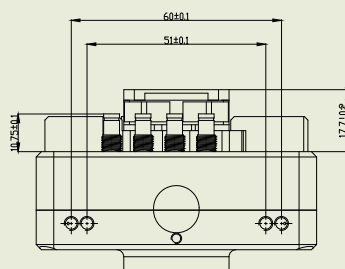
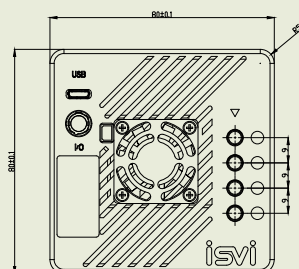
ISVI's Smart Sensor Solutions deliver the resolution, accuracy, speed and return-on-investment required for cutting-edge imaging system design in many demanding application areas including flat panel display, semiconductor, solar wafer, and secondary battery inspection, in addition to 2D & 3D metrology, virtual reality, bio-medical, aerospace, robotics, microscopy, sports & entertainment, and factory automation.

SPECIFICATIONS

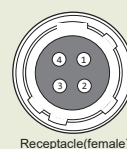
| ISVI GX models | IC-M12GX-CX1 IC-C12GX-CX1 | IC-M16GX-CX1 IC-C16GX-CX1 | IC-M25GX-CX1 IC-C25GX-CX1 |
|---|---|---|------------------------------|
| Resolution | 4000 x 3000, 12.0Mpx (Aspect ratio adjustable) | 4096 x 4096 16.8Mpx (Aspect ratio adjustable) | 5120 x 5120 26.2Mpx |
| Sensor | GPIXEL GMAX Series | | |
| Pixel Size | 2.5µm² | | |
| Active Area Dimensions (mm) | 8.75 H / 8.75 V / 12.37 Ø | 10.24 H / 10.24 V / 14.48 Ø | 12.8 H / 12.8 V / 18.1 Ø |
| Optical Format | 1.1" optical format | | |
| Chroma | Mono / Color / Enhanced NIR | | |
| Frame Rate | 150Hz @ 8bit 118Hz @ 10bit | 110Hz @ 8bit 87Hz @ 10bit | 89Hz @ 8bit 69Hz @ 10bit |
| CoaXPress Interface | CXP6: 1, 2 and 4 Links | | |
| Output Format | Mono8/10, BayerGB8/10 | | |
| Dynamic Range @ Full Well | 61.4dB(10bit) @ >6.5K e ⁻ | | |
| Parasitic Light Sensitivity | 1/10000 @ <-80dB | | |
| Exposure Mode | Continuous - Trigger Timed - Trigger Width | | |
| Exposure Control | Programmable from 13 µsec to 10 sec in 1 µsec steps | | |
| Trigger Control | Programmable Period in 1 µsec steps, External PWC | | |
| Gain Control | Digital fine gain 1x - 16x in 0.001 steps | | |
| Image Control | PRNU, DSNU, FFC and Defect Pixel Corrections | | |
| Programmable Functions | Exposure Start Delay Strobe Pulse Start Delay & Width Region of Interest 4 User Calibration Areas / 10 User FFC Calibration Areas | | |
| Lens Mount | C-Mount, F-Mount, M42, Custom OEM | | |
| Environmental Operating Conditions | 0°C to +40°C, extended temp. possible with reduced performance 20% - 90% non-condensing 25G (Half sine 6-10ms XYZ) / 10G (5-150Hz, 1min, XYZ) | | |
| Storage Temperature | -10°C to +70°C | | |
| Power Requirements | 24VDC Power over CXP (PoCXP) <13W | | |
| Dimensions (H x W x L in mm) without lens mount | 80mm x 80mm x 27.6mm | | |
| Weight | 360g (including C-Mount) | | |
| Compliance | CoaXPress 1.1/1.0, GenICam, RoHS, CE, FCC | | |



Specifications subject to change without notice.



I/O Connector



| Pin | I/O | Signal |
|-----|--------|------------|
| 1 | INPUT | TRIGGER+ |
| 2 | INPUT | TRIGGER- |
| 3 | GND | GROUND |
| 4 | OUTPUT | STROBE/EXP |

Cable mating plug: #Hirose HR10A-7P-4P(male)

Ordering Format

IC - X25 GX - CXX - XXX

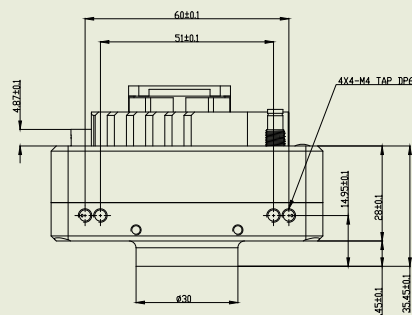
M = Monochrome
C = Color
N = NIR

1 = CXP6
2 = CXP12

42 = M42 x 1.0
CM = C-mount
FM = F-Mount

B = BBAR
I = IR-Cut
N = No Filter

Custom OEM lens mounts and filtering available



www.isvi-corp.com

TECHWAY
SIGNAL VISION SYSTEM

info@techway.fr
+33 (0)1 64 53 37 90

19 Avenue de Norvège
91140 Villebon sur Yvette
FRANCE

www.techway.fr

ISVI KOREA (Headquarters)

#103-808 SK Ventium, 166 Gosan-ro, Gunpo-si, Gyeonggi-do
15850 S. Korea T/ +82.31.427.3243 E/ sales@isvi-corp.com

ISVI GERMANY

Babenhäuser Str. 50, Geb.5, 63762 Grossostheim, Germany
T/ +49 151 656 42940 E/ sales@isvi-corp.com