



## Introduction

Users of an IEEE 1394b camera (IIDC) and adaptor under Windows XP with Service Pack 2 (SP2) will need to perform a partial rollback of SP2 in order to have access to the 800 Mbit/s (S800) mode offered by IEEE 1394b. This action is required because Windows XP SP2 limits the 1394b ports to S100 speed when upgrading to SP2. It is not necessary for Windows XP SP1 users to be concerned about this issue since the IEEE 1394b camera will be able to operate in S800 mode.

Moreover, if a transmission speed of only 400 Mbit/s is required, a Windows XP update can be applied instead of performing the partial SP2 rollback. Refer to the following Microsoft Support document for further information on the Windows XP update and for downloading the update:

<http://support.microsoft.com/kb/885222/en-us>

It is important to note that after performing the partial SP2 rollback, hot plug capability will no longer be available. Therefore, after performing the rollback of the SP2 drivers, unplugging the IEEE 1394 cable(s) between the camera(s) and the computer during acquisition can result in a Windows Stop error (blue screen). Refer to Microsoft for further information and the required hot fix:

<http://support.microsoft.com/kb/811789/en-us>

Note that when a new IEEE 1394 device is installed, Windows might perform the update to SP2 and therefore the following steps might need to be done again.

## Performing the rollback

1. To perform the partial SP2 rollback, administrator rights are required on the computer and Windows Explorer must be configured to show hidden files and folders.
2. Disconnect all IEEE 1394 devices from the IEEE 1394 adaptor.
3. Create the following two new folders:  
**\Windows\sp2\_rollback** and **\Windows\sp2\_rollback\i386**
4. Open the **\Windows\inf** directory, locate and copy the **1394.ini** file into the **sp2\_rollback** folder.
5. If SP2 is installed but not SP1, download the complete SP1 package to obtain the drivers from SP1 that will replace the drivers in SP2. In Windows Command Prompt, navigate to the SP1 download and extract the files into a new subdirectory using the following command:

```
xpsp1a_en_x86.exe /U /X:sp1_files
```

Now decompress the required files using the following two commands:

```
expand sp1_files\1394bus.sy_ %windir%\sp2_rollback\i386\1394bus.sys
```

and

```
expand sp1_files\ohci1394.sy_ %windir%\sp2_rollback\i386\ohci1394.sys
```

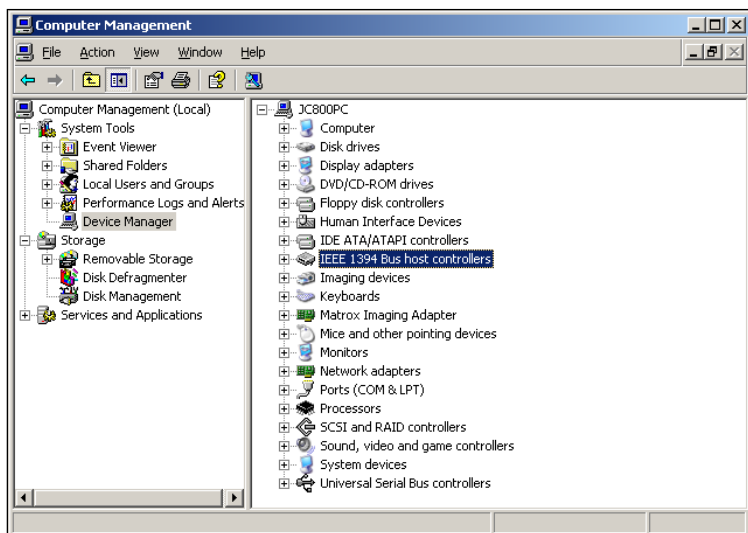
If SP1 and SP2 are both installed, locate the **sp1.cab** file in the **\WINDOWS\Driver Cache\i386** directory, open (double-click) and then copy the **ohci1394.sys** and **1394bus.sys** files into the **\Windows\sp2\_rollback\i386** directory

6. In the **\Windows\system32\drivers** director, copy the **arp1394.sys**, **enum1394.sys**, and **nic1394.sys** files into the **\Windows\sp2\_rollback** directory
7. In the **\Windows\Driver Cache\i386** directory, rename **sp2.cab** to **sp2\_inactive.cab** to disable the Windows File Protection feature that allows the installation of only the latest versions of drivers.

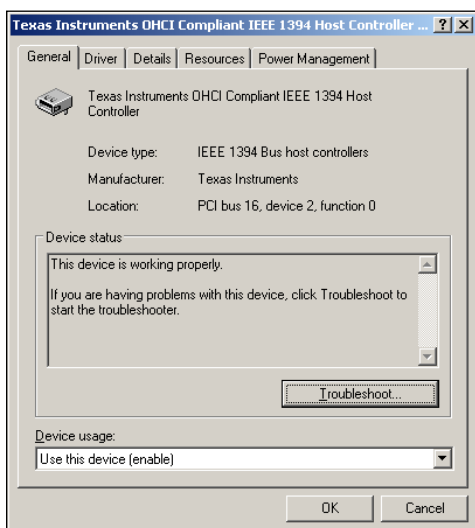


**Performing the rollback (continued)**

8. Open **Windows Device Manager** (or **Computer Management** as shown below), select and expand the **IEEE 1394 Bus host controllers** node.



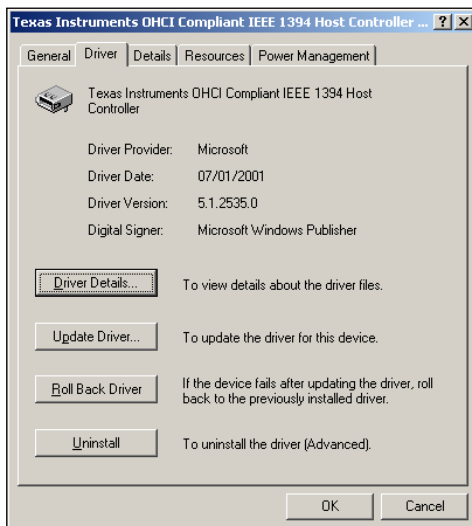
9. Double-click the IEEE 1394 controller (e.g. **\*OHCI\***) and the **...Host Controller...** window for the selected IEEE 1394 host controller will open.





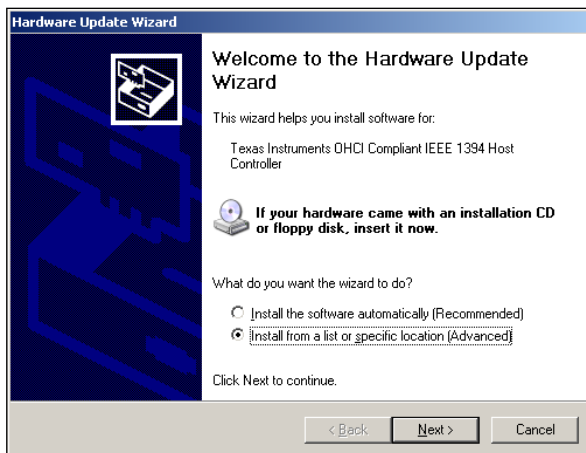
### Performing the rollback (continued)

10. Click the **Driver** tab and then the **Update Driver** button.



11. A **Hardware Update Wizard** window opens, select the option button beside **No, not this time**, and then click on **Next**.

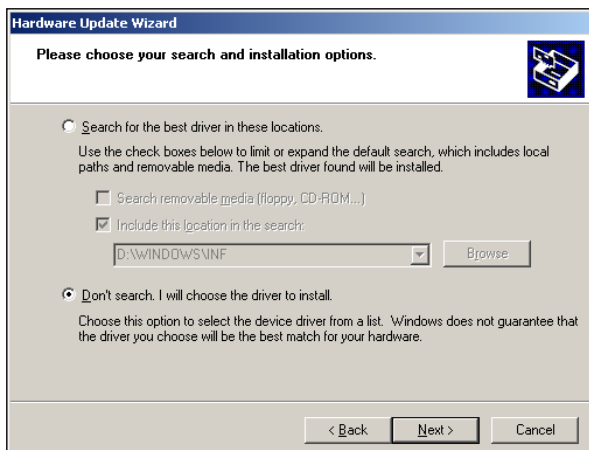
12. A new **Hardware Update Wizard** window opens, select the option button beside **Install from a list or specific location (Advanced)** as shown below, and then click on **Next**.



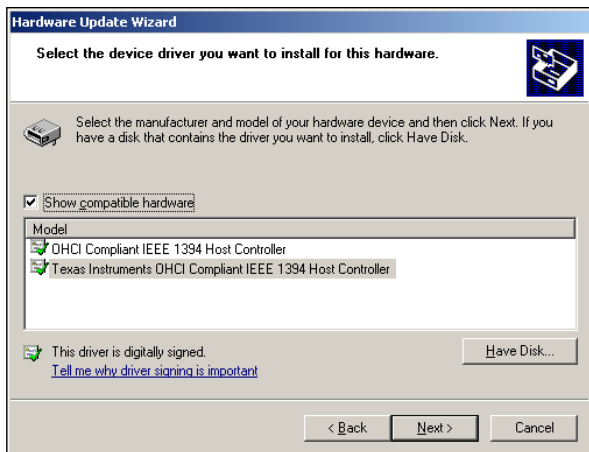


### Performing the rollback (continued)

13. A new **Hardware Update Wizard** window opens, Select the option button beside **Don't search. I will choose the driver to install** as shown below, and then click on **Next**.



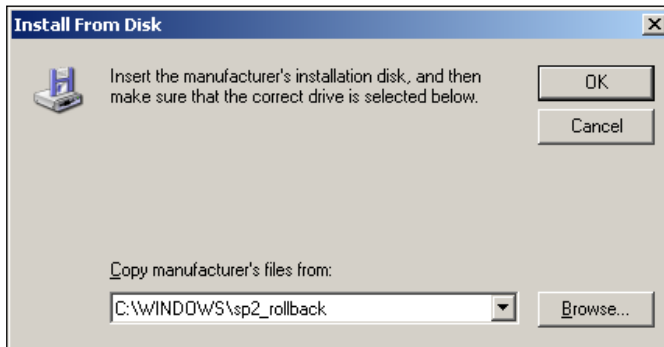
14. A new **Hardware Update Wizard** window opens, ensure that the **Show compatible hardware** box is checked, click the **Have Disk...** button and the **Install From Disk** window will open.





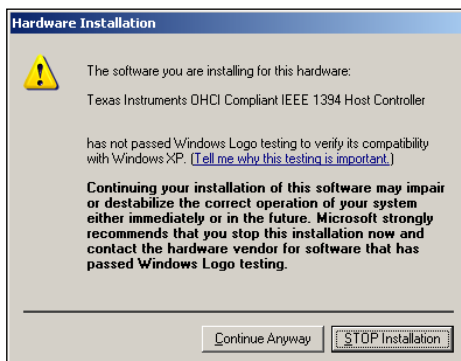
### Performing the rollback (continued)

15. Enter the **C:\Windows\sp2\_rollback** directory in the **Copy manufacturer's files from:** edit field as show below. Click on **OK**.



16. A **Hardware Update Wizard** window similar to **step 13** will open. Ensure that the check box in front of **Show compatible hardware** is checked, and then click on **Next**.

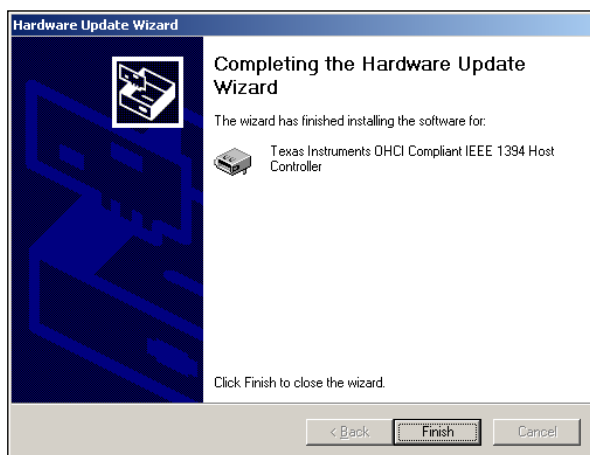
17. If the **Confirm File Replace** window opens for the **ohci1394.sys** file and **1394bus.sys** file, ignore both error messages and click **Yes** for both. You will then receive another warning message as show below, ignore this warning and click on the **Continue Anyway** button.



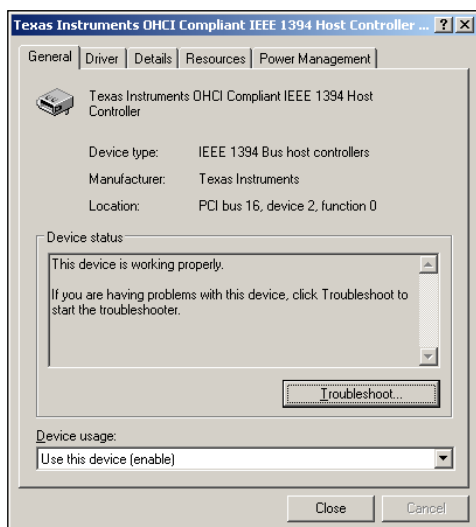


### Performing the rollback (continued)

18. A new **Hardware Update Wizard** window opens, click on **Finish** to complete the partial SP2 rollback.



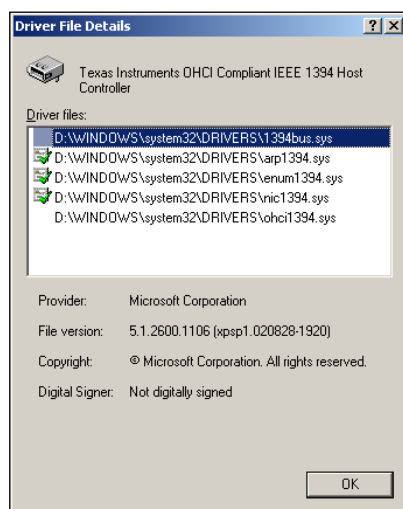
19. Verify the partial SP2 rollback by reopening the **\*Host Controller...** window of the IEEE 1394 host controller in **Windows Device Manager**, click on the **Driver** tab, then click on the **Driver Details** button.





### Performing the rollback (continued)

20. The updated ohci1394.sys and 1394bus.sys files installed during partial SP2 rollback will not be checked by a checkmark as shown below. Click the ohci1394.sys and 1394bus.sys files to display the versions of the files. The partial SP2 rollback is successful if the displayed versions are identical to the versions of the ohci1394.sys and 1394bus.sys files that were copied into the \Windows\sp2\_rollback\i386 directory during partial SP2 rollback.



21. If you have more than one IEEE 1394 controller on your computer (e.g., the Device Manager window shows two IEEE 1394 controllers), repeat the above step for installation and to check whether the partial SP2 rollback was also carried out for the additional controllers. If you find that the partial SP2 rollback was not carried out for an IEEE 1394 controller, repeat steps 9 to 20 for that IEEE 1394 controller.

21. To re-enable the Windows File Protection feature:
- Navigate to the Windows\Driver Cache\i386 directory.
  - Rename sp2\_inactive.cab to sp2.cab.

## Contact

TECHWAY S.A.S.

2 route de la noue - BP76 - 91193 Gif-sur-Yvette Cedex - France

T: +33 (0)1 64 86 52 95 - F: +33 (0)1 64 86 18 19

info@techway.fr - [www.techway.fr](http://www.techway.fr)